



United States Department of Agriculture
Forest Service

USFS-NASA Applications Workshop Words of Wisdom (hopefully)

Everett A. Hinkley
National Remote Sensing Program Manager
Geospatial Management Office

Closing Thoughts

- Thanks to all of you
- Value of face-to-face meeting
 - Meeting people and developing relationships – Networking!!!!
 - Side-bar meetings and discussions
 - Reminder: Attendee bios in meeting package
- Why we are here
- Aha Moments!
- Next Steps
 - Workshop Report (Matt Reeves – Lead)
 - Priority Action Items – Report outs
 - Engagement Platform
 - A structured way to foster continued engagement, alignment and to identify further commonalities. Moving away from ad hoc engagement between USFS and NASA mission areas
 - Memo of Understanding (MOU) – Overarching and strategic



Why We Are Here

- **Goals:** To share and demonstrate the capabilities of NASA data products, as well as to develop connections and strengthen partnerships between NASA and the USDA Forest Service.
- **Objectives:**
 - ✓ To provide an overview of NASA missions and projects, data, and tools supporting natural resource management;
 - ✓ To share and prioritize USDA Forest Service operational needs with NASA;
 - ✓ To identify opportunities for collaboration; and
 - ✓ To expand USDA Forest Service awareness of NASA data sources and tools and mutually explore ways to advance information delivery.



Why We Are Here

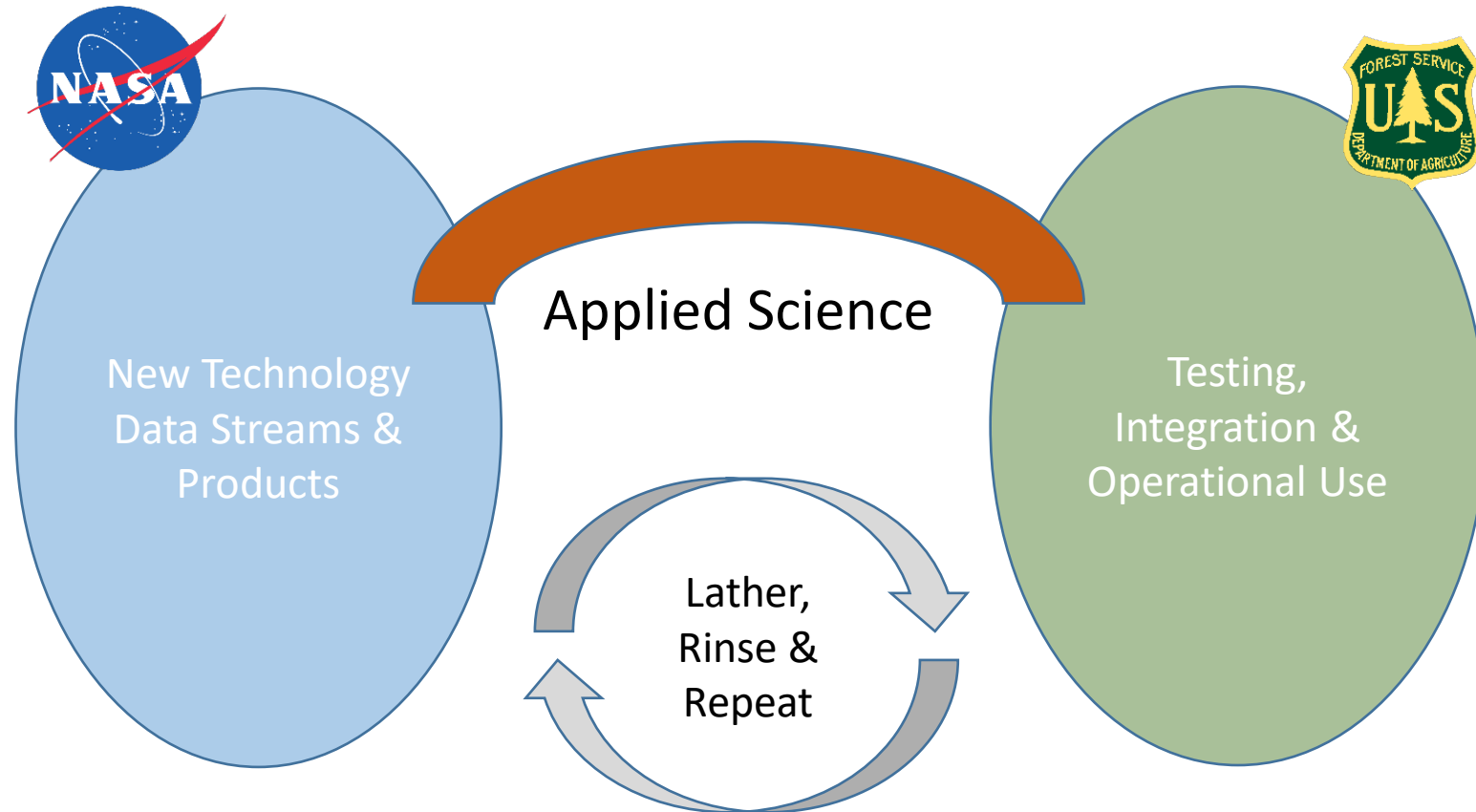
Building awareness, identifying key
contacts and needs,
And starting the dialog

Fostering
Momentum & Engagement

Closing Thoughts

- Thanks to all of you
- Value of face-to-face meeting
 - Meeting people and developing relationships – Networking!!!!
 - Side-bar meetings and discussions
 - Reminder: Attendee bios in meeting package
- Why we are here
- Aha Moments!
- Next Steps
 - Workshop Report (Matt Reeves – Lead)
 - Priority Action Items – Report outs
 - Engagement Platform
 - A structured way to foster continued engagement, alignment and to identify further commonalities. Moving away from ad hoc engagement between USFS and NASA mission areas
 - Memo of Understanding (MOU) – Overarching and strategic

Bridging the Gap



The Team

Jess Clark & Justin Epting – Our incredible logistical support here at GTAC

Deb Oakeson – GTAC Director and Acting GIO, and your senior host at this facility

Workshop Planning Team

- **Leads:**
Chalita (Sriladda) Forgotson, PhD - NASA Hydrological Sciences Lab., Science Systems and Applications, Inc.
Erik Johnson - USDA Forest Service – Program Analyst, Office of Sustainability & Climate
- **Planning & Logistics:**
Ana Wilson - Electrosoft
- **Support Team /SMEs:**

Forest Service	NASA / USGS	Academia / NSIDC
Justin Epting Jess Clark Carlos Ramirez Raha Hakimdavar Stacie Bender James Ellenwood Everett Hinkley	Sabrina Delgado Arias, Goddard Edil Sepulveda Carlo, Goddard Temilola Fatoyinbo, Goddard Andreas Colliander, JPL Natasha Stavros, JPL Narendra Das, JPL Birgit Peterson, USGS	Laura Innice Duncanson, Univ. of Maryland Nancy Glenn, Boise State Amy Neuenschwander, University of Texas Yaxing Wei, Univ. of Alaska - Fairbanks Heidi Kristenson, Univ. of Alaska Paul Moth, Nat’l Snow & Ice Data Center Amy Fitzgerrell, Nat’l Snow & Ice Data Center



United States Department of Agriculture
Forest Service

Thank You!



Everett A. Hinkley
National Remote Sensing Program Manager
Geospatial Management Office
Everett.Hinkley@usda.gov
703-605-0830 office



Mapping Our Future Together

Remote Sensing, Geographic Information Systems, Cartography, Photogrammetry, Training, and Information Services

USDA is an equal opportunity employer