



National Aeronautics and Space  
Administration

NASA Carbon Monitoring System



# CMS Data Products and Applications Overview

Edil A. Sepúlveda Carlo

CMS Applications Coordinator

NASA GSFC / SSAI



## CMS Applications Team:

Vanessa Escobar, NASA HQ/Booz Allen

Molly Brown, University of Maryland

Sabrina Delgado Arias, NASA GSFC/SSAI

Chalita Forgotson, NASA GSFC/SSAI

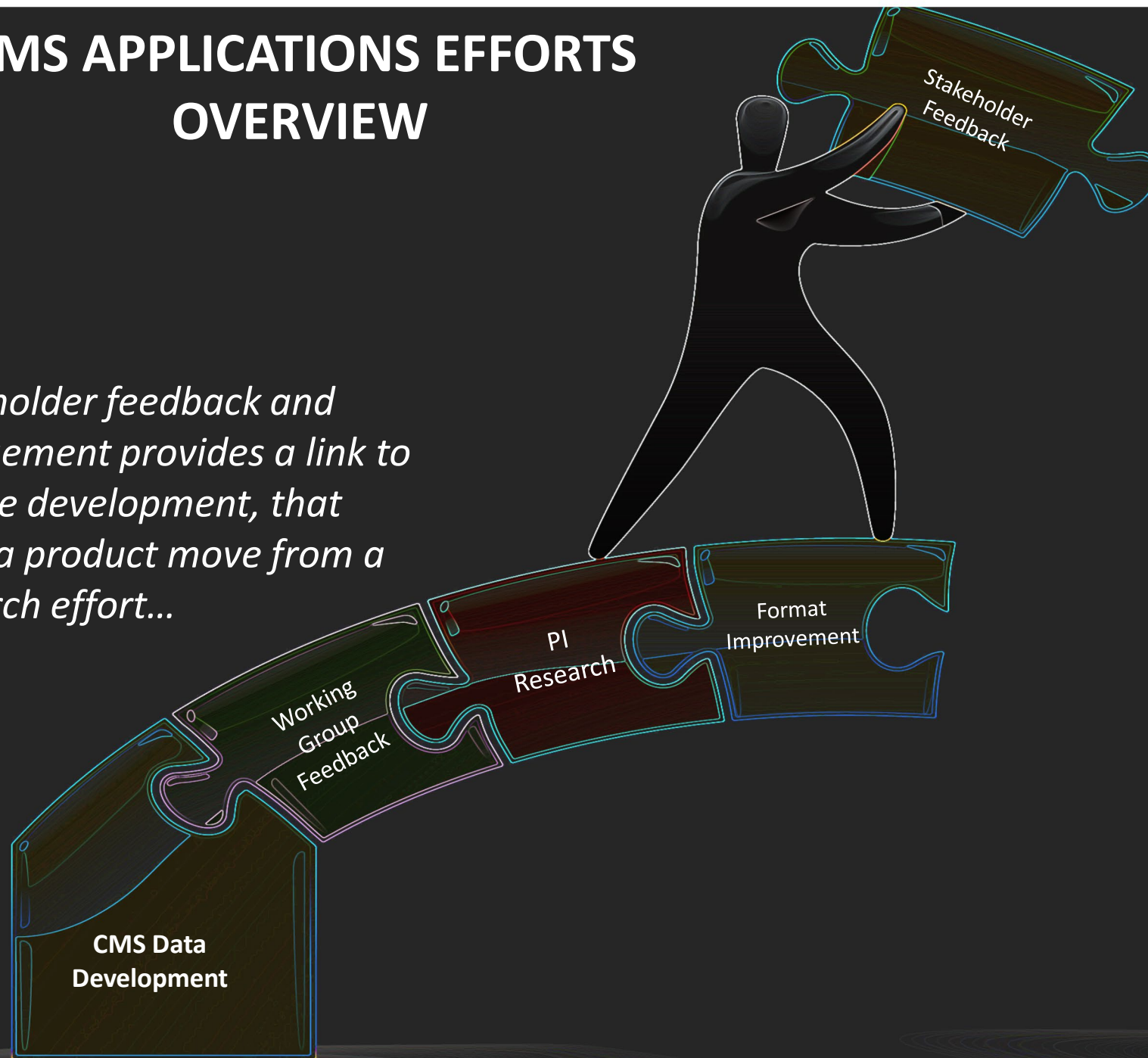
USFS-NASA Applications Workshop – Salt Lake City, UT  
Tuesday, April 30, 2019

# CMS APPLICATIONS EFFORTS OVERVIEW

## Goals of CMS Applications Efforts:

- Link Stakeholders to CMS science products.
- Provide a path for feedback and lessons learned for CMS PIs so CMS is more accessible and user friendly.
- Inform NASA HQ of the needs and requirements of the carbon science community.
- Leverage opportunities between NASA CMS and stakeholders in an effort to expand the knowledge and familiarity of CMS data products to help improve decision processes.

*Stakeholder feedback and engagement provides a link to science development, that helps a product move from a research effort...*



*...to a user friendly  
decision support  
system*





# CMS Applications Program Framework

## Policy Speaker Series

Brings stakeholders to NASA to explain how carbon science data are applied to specific policies. Informs CMS science community of specific stakeholders data needs and collaboration opportunities.



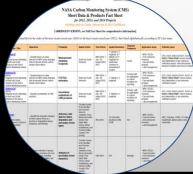
## Applications Workshops

Annual event with CMS Science Team and end users for a better understanding of stakeholder uses, needs and challenges for carbon monitoring and MRV as well as lessons learned.



## Data Products Fact Sheet

Collection of CMS metadata and policy data for each product (e.g. spatial extent, resolution, uncertainty, application areas, relevant policies), Integrated into CMS website database.



## Application Readiness Levels (ARLs)

Provide transparency to HQ and user community on the maturity of each CMS product. Used as a communication tool for stakeholders to assess product maturity.



## Surveys & Community Assessments

Evaluate thematic user challenges within the CMS. Assess impact of CMS data products for end user organizations.



## Socioeconomic Studies

Development of socioeconomic case study addressing the social value of CMS Lidar in MD DNR policy, and an ongoing assessment of the contribution of CMS flux products to the reduction of uncertainty in the carbon cycle.



**CMS Applications Efforts Examples.** Tri-State Area Applications Workshop & Tutorial in Newtown Square, PA: CMS Application workshops and tutorials provide an opportunity for CMS Science Team members and stakeholders to engage on thematically detail objectives that help advance CMS science into appropriately scaled policy arenas.





# ARL Refresher

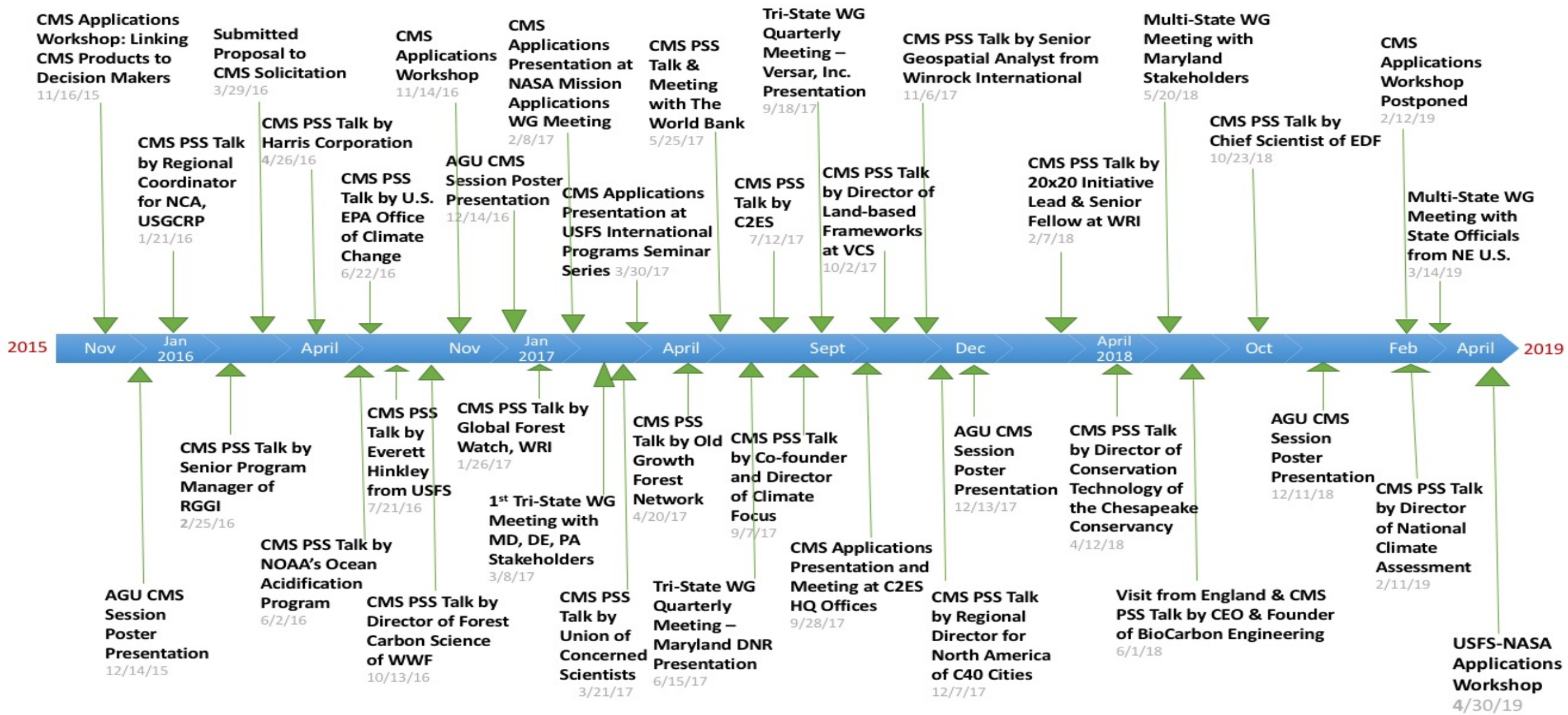


- Serve as a guide to user community
- Set expectations to user on how to use products and what feedback to provide
- ARL designated by the CMS PI
- Update as needed
- Intended to guide HQ and user community on the maturity of products



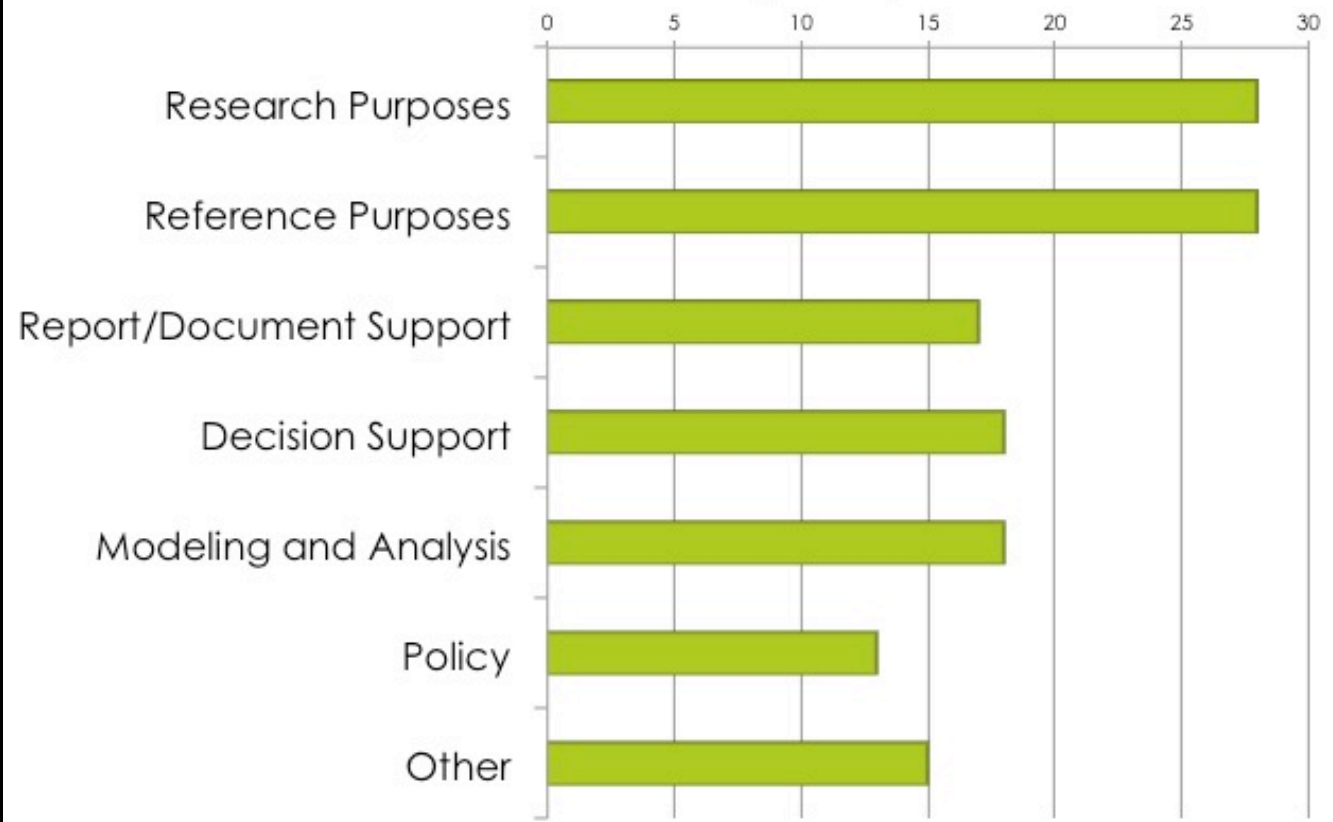


# Timeline of CMS Applications Efforts & Activities 2015-19





How are stakeholders using CMS products?



21 PIs responded  
47 stakeholders  
identified

# CMS Stakeholder Survey for Science Team

- Main stakeholders: US EPA, USDA Forest Service, NOAA, CA ARB
- Not all stakeholders are using CMS data products at this moment
- All products, be research or operational products, have feedback potential





National Aeronautics and Space  
Administration

## NASA Carbon Monitoring System

### Stakeholders engaged by CMS Applications Efforts through Applications Workshops, Policy Speaker Series, and other engagement activities

The overarching objective of the applications effort is to broaden and strengthen the knowledge and engagement of the research and applications communities within the Carbon Monitoring System (CMS) Initiative.



Joint Global Change  
Research Institute



MINISTRY OF ENVIRONMENT AND FORESTRY  
REPUBLIC OF INDONESIA



The Nature  
Conservancy



Colorado State University

RGGI Inc.



WORLD  
RESOURCES  
INSTITUTE



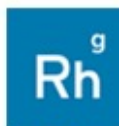
The Climate Registry



WWF



RESTORE  
AMERICA'S  
ESTUARIES



RHODIUM  
GROUP



Chesapeake Bay Program  
Science. Restoration. Partnership.



Chesapeake  
Conservancy



Programa Mexicano del Carbono  
RED TEMÁTICA DEL CONACYT



Ocean  
Conservancy



CONSERVATION  
INTERNATIONAL



VERSAR



Union of  
Concerned Scientists  
Science for a healthy planet and safer world

WILDLIFEWORKS



SONOMA COUNTY  
AGRICULTURAL PRESERVATION  
AND OPEN SPACE DISTRICT



NORTHWEST  
MANAGEMENT, INC.

89.3 KPCC  
Southern California Public Radio



SigmaSpace



EPA  
United States  
Environmental Protection  
Agency



USGS  
science for a changing world

HARRIS



United States  
Global Change  
Research Program



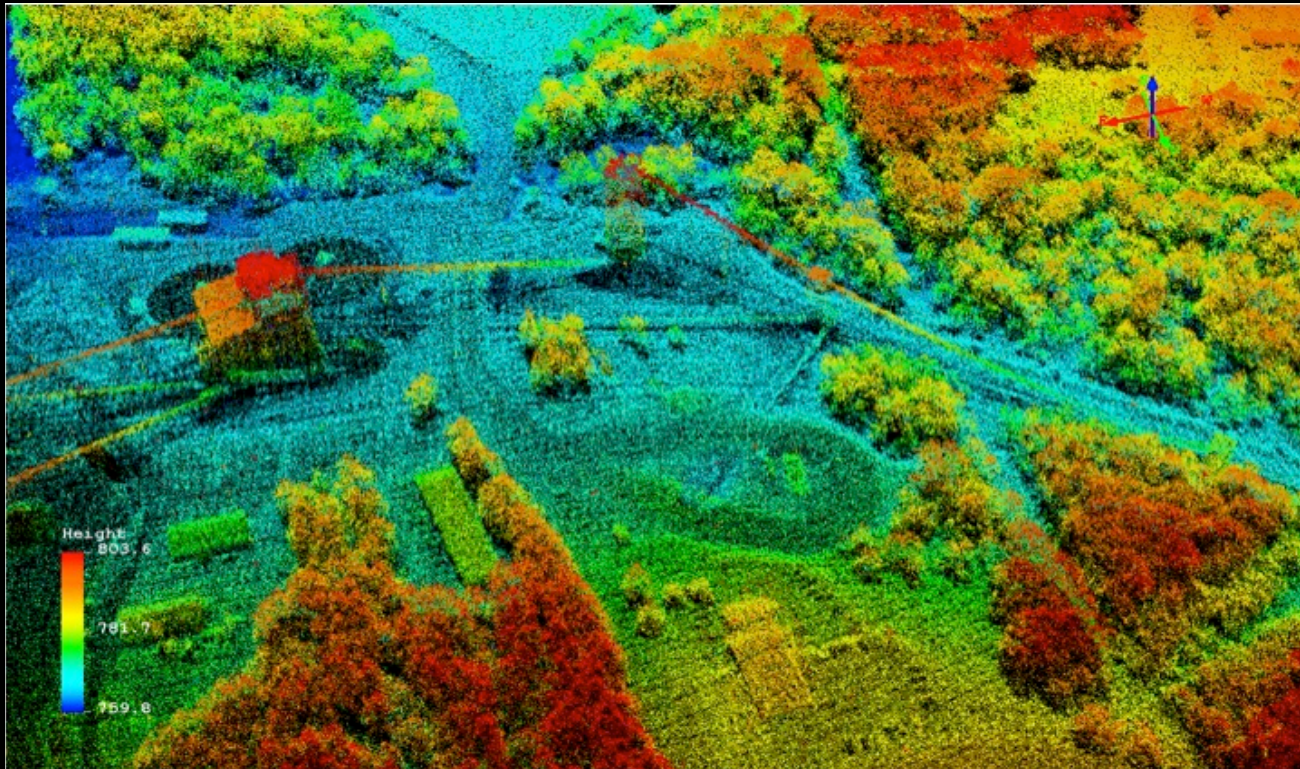
NIST  
National Institute of  
Standards and Technology  
U.S. Department of Commerce

California Environmental Protection Agency  
Air Resources Board

Council on Environmental Quality



# Data Products & Applications Highlights





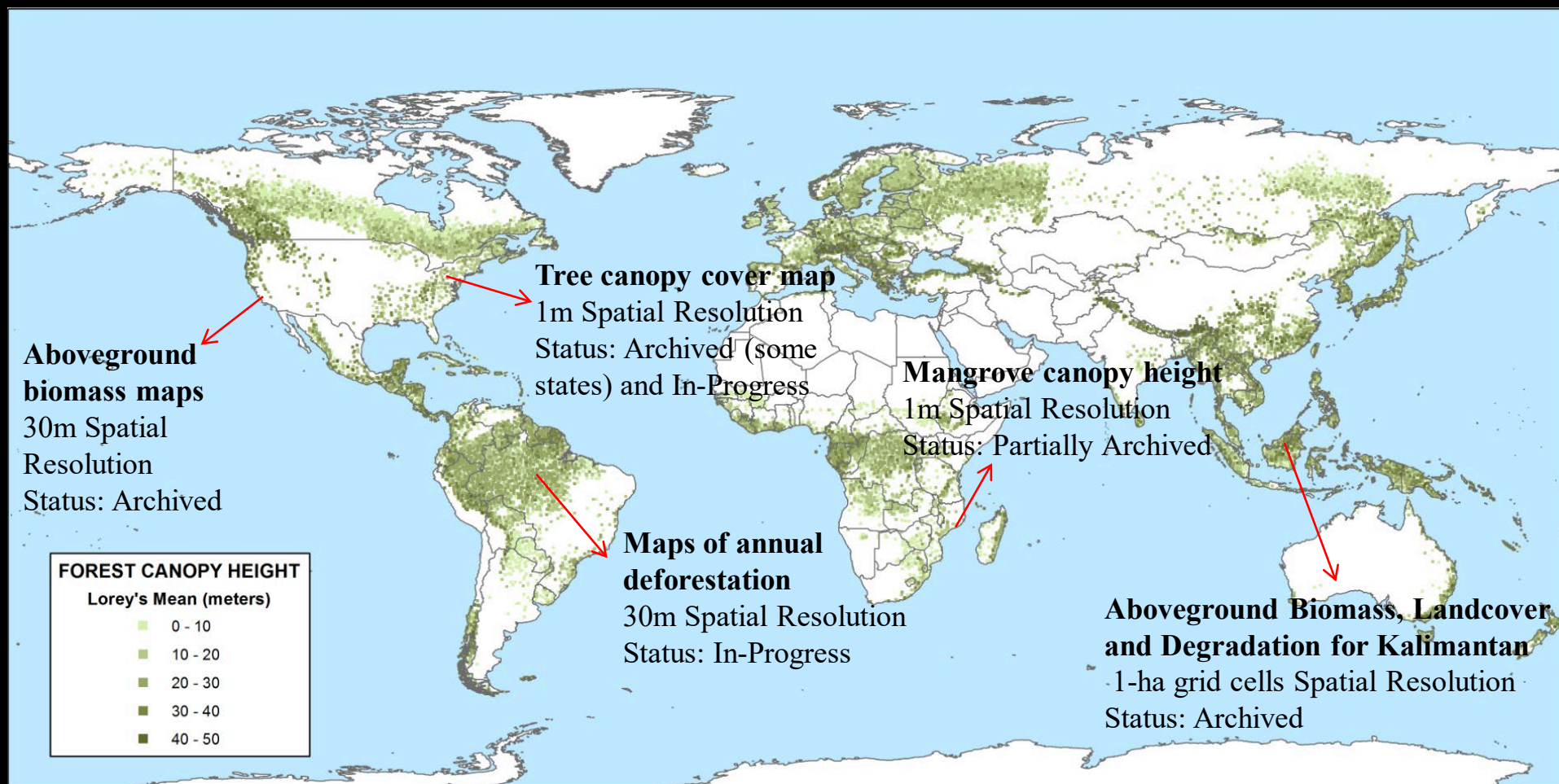


# CMS Data Products

81 Projects

170+ Data Products

Local to international scale



Global forest canopy height (Healey, 2015)  
Archived at ORNL DAAC

Available at: <https://doi.org/10.3334/ORNLDAC/1271>




# Overview of CMS Data Products

- Where can CMS datasets be found?

DAAC Home > Get Data > NASA Projects > Carbon Monitoring System (CMS)

## Carbon Monitoring System (CMS)

### Overview



The NASA Carbon Monitoring System (CMS) is designed to contribute to characterizing, quantifying, understanding evolution of global carbon sources and sinks through in stocks and fluxes. The System will use the full range of data and modeling/analysis capabilities to establish the accuracy, uncertainties, and utility of products for supporting national regulatory, and management activities. CMS will maintain providing finer scale regional information, utilizing space-based and surface-based data to initiate generation and distribution of products both for user evaluation and to development and planning.

### Carbon Monitoring System Datasets List

Sign in to download CMS datasets.

45 CMS datasets  
Show All entries

<input checked="" type="checkbox"/> CMS dataset
Forest Aboveground Biomass and Carbon Sequestration Potential for Maryland, USA <span>NEW</span>
Ecosystem Functional Type Distribution Map for the Conterminous USA, 2001-2014
Soil Organic Carbon Stock Estimates with Uncertainty across Latin America
Tidal Wetland Soil Carbon Stocks for the Conterminous United States, 2006-2010
Aboveground Biomass, Landcover, and Degradation, Kalimantan Forests, Indonesia, 2014
Global Fire Atlas with Characteristics of Individual Fires, 2003-2016
CMS: Atmospheric CO <sub>2</sub> and C Isotopes, Fossil Fuel Contributions, California, 2014-2015

EARTHDATA Find a DAAC

## GES DISC

Atmospheric Composition, Water & Energy Cycles and Data Collections

### Data Collections

Showing

#### Refine By

**Subject Sort**

- ☐ Atmospheric Chemistry (12)
- ☐ Ocean Chemistry (7)

**Measurement Sort**

- ☐ Alkalinity (1)
- ☐ Biogeochemical Cycles (1)
- ☐ Carbon (1)
- ☐ Carbon Dioxide (9)
- ☐ Dissolved Gases (1)

[More...](#)

**Source Sort**

- ☐ GOSAT TANSO-FTS (2)
- ☐ Models/Analyses BLING (1)
- ☐ Models/Analyses CASA-GFED3-V2 (1)
- ☐ Models/Analyses CMS-Flux-V1 (5)
- ☐ Models/Analyses ECCO2\_Darwin-V3 (1)

[More...](#)

**Processing Level Sort**

- ☐ 4 (13)

**Project Sort**

#### Image

Hover

Hover

Hover

Hover

## NASA Carbon Monitoring System

Sign In | My Account | Sign Out

Search

- Home
- Objectives
- Teams & Projects
- Working Groups
- Missions & Instruments
- Timeline
- Calendars
- Applications
- Meetings
- Publications
- Documents
- Links
- Data & Products
- Contacts

### Fatoyinbo (CMS 2014) Project Profile

(updated 23-Feb-2018)

[View/Print Full Project Profile](#)

**Project Title:** Total Carbon Estimation in African Mangroves and Coastal Wetlands in Preparation for REDD and Blue Carbon Credits

**Science Team Members:** Temilola (Lola) Fatoyinbo, NASA GSFC (Project Lead)  
David Lagomasino, USRA-NASA

**Project Duration:** 2014 - 2018

**Solicitation:** NASA: Carbon Monitoring System (2014)

**Abstract:** Coastal Blue Carbon ecosystems such as mangroves, salt marshes and seagrass beds have the highest total carbon densities of all ecosystems. Although they only represent 3% of the total forest area, carbon emissions from mangrove destruction at current rates could be equivalent to 10% of carbon emissions from deforestation. The high carbon sequestration ... [\[more\]](#)

**Keywords:** CMS:  
Land Biomass  
Land-Atmosphere Flux  
Land-Ocean Flux  
Decision Support  
MRV

**Participants:** Temilola (Lola) Fatoyinbo, NASA GSFC  
Emanuele Feliciano, NASA GSFC / ORAU  
David Lagomasino, USRA-NASA  
Marc (Mac) Simard, Jet Propulsion Laboratory / Caltech  
Contact [Support](#) to request an email list of project participants.

**Project URL(s):** None provided.

**Data Products:**

<b>Product Title:</b>	Mangrove forest biomass estimates.
<b>Time Period:</b>	2013-2015
<b>Spatial Extent:</b>	Gabon, Tanzania, and Mozambique
<b>Spatial Resolution:</b>	1m to 12m
<b>Temporal Frequency:</b>	Single Product 2013/2014
<b>Status:</b>	In-Progress
<a href="#">...more</a>	

Metadata Fields	Explanation
Award Year	The year the funding was granted
Project ID	Principal Investigator's last name and project #
Objectives	Goals that the project seeks to attain by developing data and products
Science Theme	Type of data and products, according to components of carbon cycle research that are most relevant: Global Flux, Ocean-Atmosphere Flux, Land-Atmosphere Flux, Land-Ocean Flux, Land Biomass, Ocean Biomass, Lake Biomass, MRV, and Decision Support
Products Keywords	Keywords that will help stakeholders identify data and products appropriate to their needs. See below for a table that explains each product keyword.
Data Products	A description of output data and products that will be publicly available upon completion of the project
Spatial Extent	The geographical area that the data and products cover
Coordinates	Coordinates can be approximate. They can be the center of Spatial Extent or study sites. Shape files are welcome.
Time Period	The time period that the data and products cover
Spatial Resolution	Finest spatial resolution of data and products
Temporal Frequency	Time intervals of data products
Input Data Products	Any satellite, airborne, field, and modeled data products used. If airborne Lidar data was used, please indicate where, when, which instruments, and how much data (area, dimensions, or number and length of lines).
Algorithm/Models Used	Any algorithm or models used to develop data and products
Evaluation	Any efforts to evaluate the accuracy, robustness, and/or performance of data and products
Intercomparison Efforts/Gaps	Any key intercomparison effort(s) that have been undertaken or gaps where future intercomparison efforts are warranted
Uncertainty Estimates	Plans to quantify data uncertainty, if any
Uncertainty Categories	1. Ensemble (e.g. stochastic), 2. Deterministic, 3. Model-Data Comparison, 4. Model-Model Comparison, and/or 5. Data-Data Comparison
Application Areas	Areas with policy or societally relevant decision processes, which may benefit from the usage of data and products
Potential Users	Possible end users of data and products once fully developed
Stakeholders	End users engaged with CMS PIs who are using or plan to use data and products in the future
Application Readiness Level (ARL)	The NASA index that assesses applications potential of data and products in operational settings. <a href="#">Detailed explanation</a> . Principal Investigators specified the ARLs of their own projects
Future Developments	Future plans to engage stakeholders, share data and products, and raise awareness of the product development efforts
Limitations	Any shortcoming of data and products that users must be aware of
Date When Data/Product Available	The date (MM/DD/YY - if possible) on which data and products will be made publicly available
Data Server URL	The URL address where a user may access data and products
Metadata URL	The URL address where a user may access metadata





## *CMS: Forest Carbon Stocks, Emissions, and Net Flux for the Conterminous US: 2005-2010*

*PI: Sassan Saatchi, NASA JPL*

**Description:** This data set provides maps of estimated carbon in forests of the 48 continental states of the US for the years 2005-2010.

**Spatial Coverage:** Conterminous USA (CONUS)

**Spatial Resolution:** 100-m resolution and county level

**Temporal Coverage:** 2005 - 2010

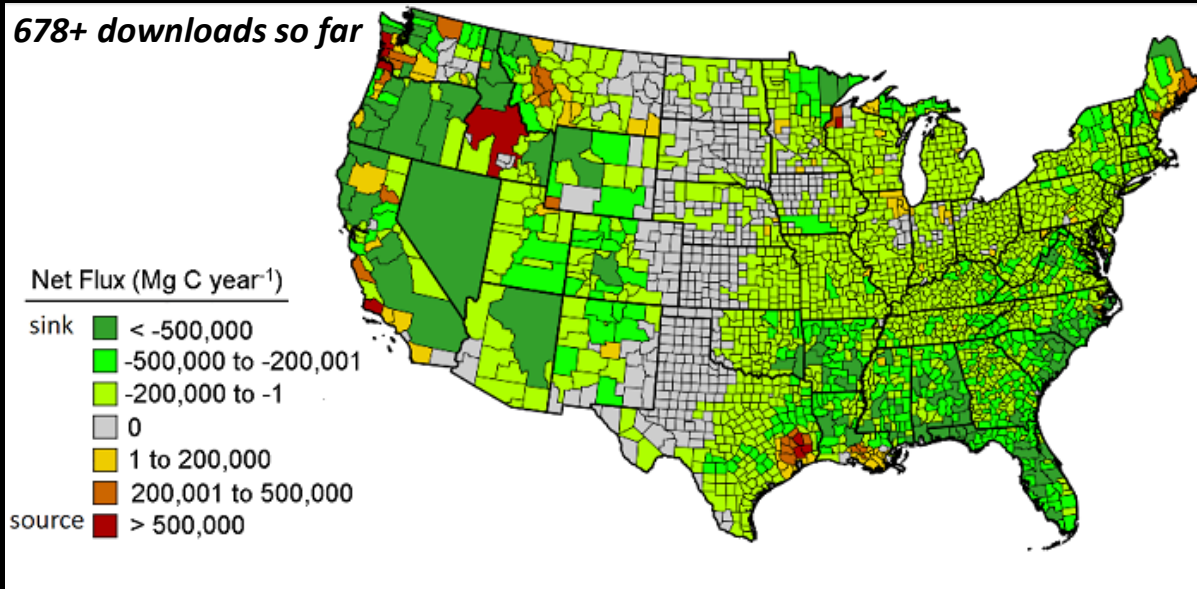
**Temporal Resolution:** Annual

**ARL:** 7

**Users & Purpose:** used extensively within the science community for reference purposes, and USFS has already used the data for validation of spatial variation of carbon for couple of states

**Limitations & Future Work:** Limitations include reduced (a) spatial resolution of logging information (only at combined county-level) and (b) limited temporal resolution (5-year increment). Working to resolve limitations: moving to annual carbon mapping, and extending some of the products to Alaska.

678+ downloads so far



Average annual committed net carbon flux (Mg C/yr) at the combined country scale (from Hagen et al.)

### **USFS Potential Applications:**

- A land manager at a regional level could use these data products to gain insight into changes in carbon in their regional forests
- Prioritization of forest management and land use policies
- Plan by the USFS to include this methodology for Mexico and other countries with limited or no national inventory approaches
- New IPCC guidelines about the use of RS data for carbon accounting



## *Lidar-Derived Aboveground Biomass and Uncertainty for California Forests, 2005-2014*

*PI: Jonathan Greenberg, University of Nevada, Reno*

**Description:** This dataset provides estimates of aboveground biomass and spatially explicit uncertainty from 53 airborne LiDAR surveys of locations throughout California between 2005 and 2014.

**Spatial Coverage:** Surveyed areas throughout California

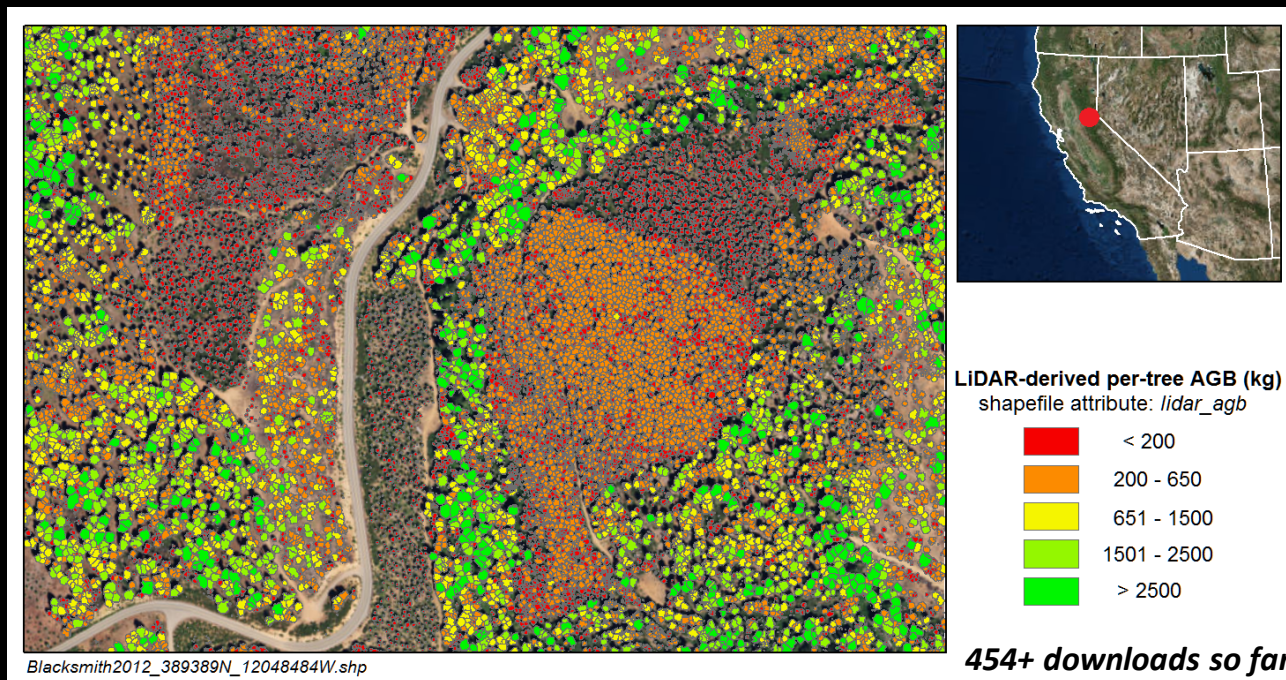
**Spatial Resolution:** 30-m\*

**Temporal Coverage:** 2005 - 2014

**Temporal Resolution:** Once

**ARL:** 4

**Users:** Carlos Ramirez from USDA Forest Service



Per-tree aboveground biomass (kg) derived from LiDAR-measured tree heights for the Blacksmith site in 2012 (from Blacksmith2012\_389389N\_12048484W.zip).

### **USFS Potential Applications:**

- Aboveground biomass is an important metric for assessing carbon sequestration in forests.





## *CMS: LiDAR-derived Biomass, Canopy Height and Cover, Sonoma County, California, 2013*

*PI: Ralph Dubayah, University of Maryland*

**Description:** This data set provides estimates of above-ground biomass (AGB), canopy height, and percent tree cover at 30-m spatial resolution for Sonoma County, California, USA, for the nominal year 2013.

**Spatial Coverage:** Sonoma County, CA, USA

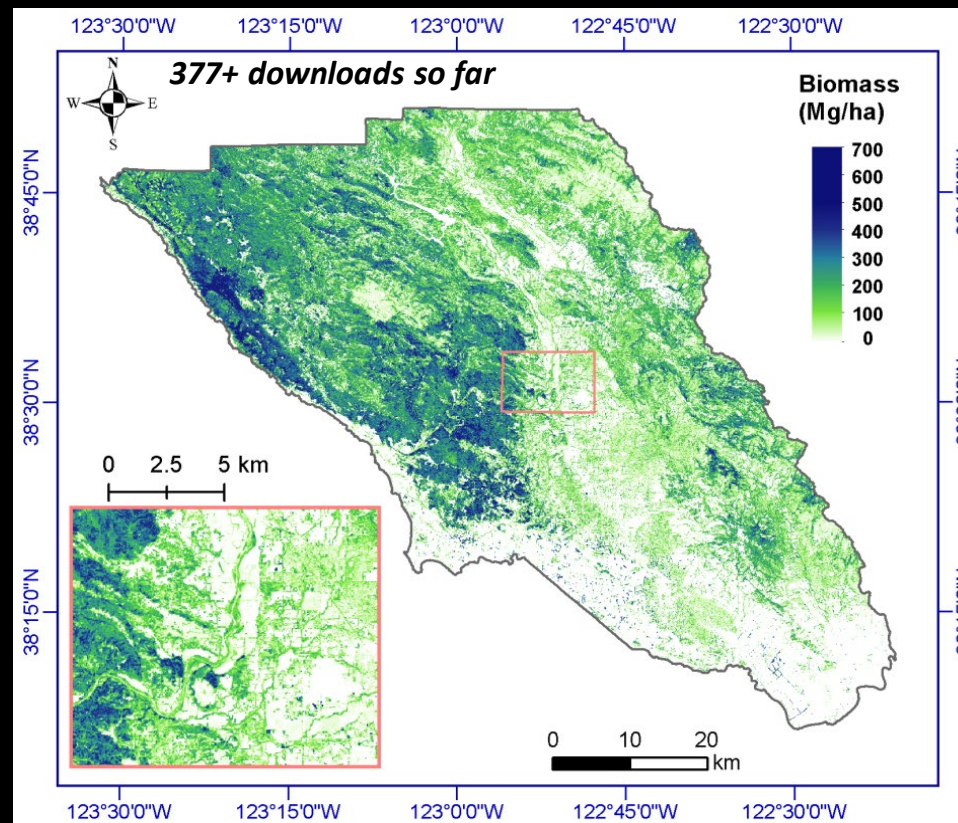
**Spatial Resolution:** Grid cells at 30-meter resolution

**Temporal Coverage:** 2013

**Temporal Resolution:** One time

**ARL:** 9

**Users & Purpose:** The products have supported all facets of **Sonoma County Agricultural Preservation and Open Space District's** work: field reconnaissance, conservation planning and prioritization, conservation easement design, easement monitoring and enforcement, and fee land management.



Estimated aboveground biomass (Mg/ha) for Sonoma County at 30-m spatial resolution using the random forest method. Zoom-in figure is a subset near Santa Rosa, the largest city in California's North Coast.

## **USFS Potential Applications:**

- Habitat mapping and modeling
- Forest inventorying
- As an input to wildfire modeling/fuel modeling
- Disease hazard/risk

## **Feedback from Stakeholders – Successes:**

- The data are being used widely, for applications in forest management, disaster response, education and outreach, scientific research, conservation, among others.
- Survey showed that 13 out of 59 respondents indicated that the data are mission critical or very important; and 33 indicated that they are important or nice to have.
- These data are being used to map priority areas for land conservation, and enable Ag + Open Space and their conservation partners to write competitive grant proposals and to demonstrate the value of habitat protection to our community and funders.





*LiDAR-derived Biomass, Canopy Height and  
Cover for Tri-State (MD, PA, DE) Region, V2*  
PI: George Hurtt, University of Maryland

**Description:** This dataset provides 30-meter gridded estimates of aboveground biomass (AGB), forest canopy height, and canopy coverage for Maryland, Pennsylvania, and Delaware in 2011. **ARL:** 9

**Spatial Coverage:** Maryland, Pennsylvania, Delaware

**Spatial Resolution:** 30-meter or 90-meter

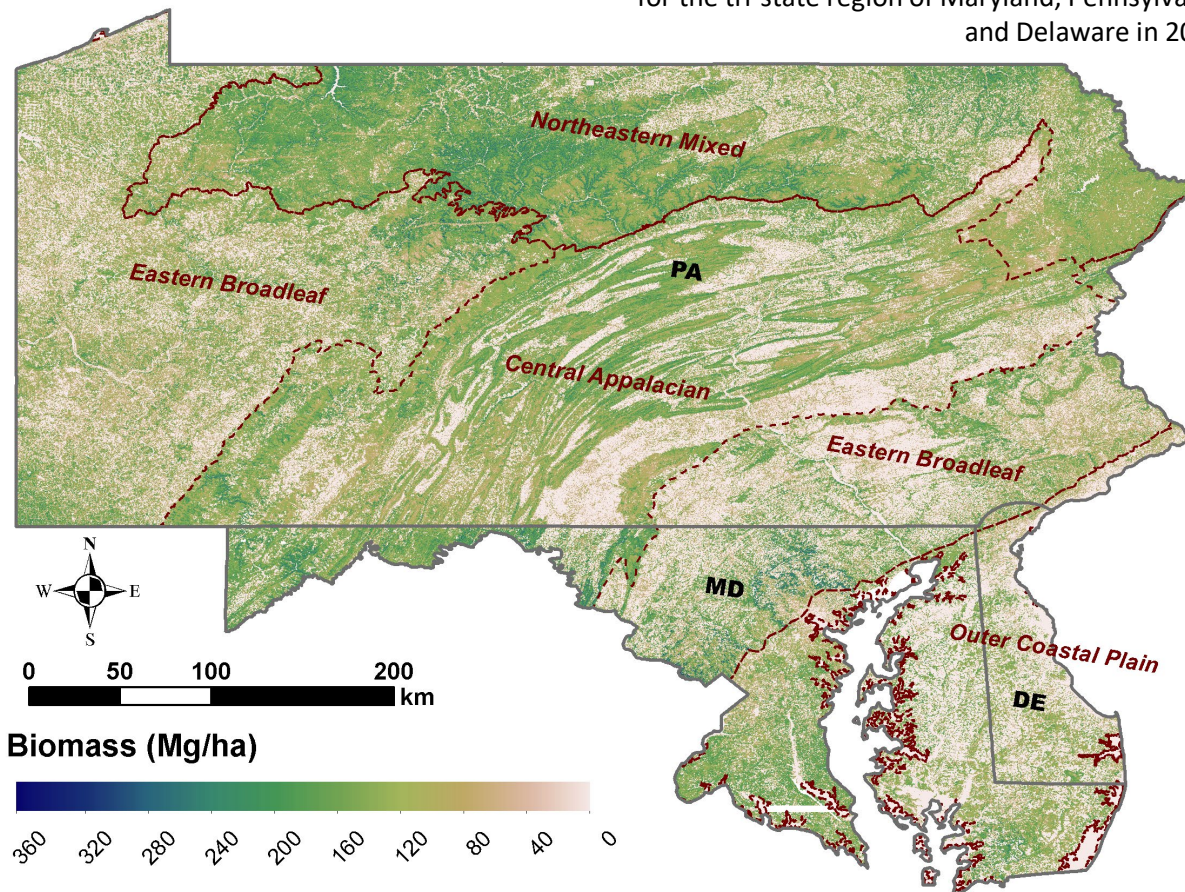
**Temporal Coverage:** 2004 – 2014

**Temporal Resolution:** Annual

Users in Maryland	Purpose
Maryland Department of Natural Resources	<ul style="list-style-type: none"><li>- Using the CMS forest cover layer in their ecosystem service valuation work, and to develop the state forest carbon sequestration map</li><li>- Also looking into ways that CMS can inform the state's forestry and sequestration sector, and help achieve the goals of the Greenhouse Gas Reduction Act</li></ul>
Maryland Forest Service	<ul style="list-style-type: none"><li>- Habitat location analyses for Golden Wing Warbler</li><li>- Estimating the amount of stream buffer by county</li><li>- Various metrics for a multitude of smaller projects</li></ul>
Maryland Department of the Environment	<ul style="list-style-type: none"><li>- Modeling land cover in the Chesapeake Bay model</li></ul>
Baltimore City Department of Recreation & Parks (TreeBaltimore Partnership)	<ul style="list-style-type: none"><li>- To monitor Urban Tree Canopy goals in the city</li></ul>
The Nature Conservancy	<ul style="list-style-type: none"><li>- Map 'mature' forest, prioritize locations for forest inventory and inform restoration projects</li><li>- Looking at forest connectivity for climate resilience in the central Appalachian portion of western Maryland</li></ul>
Queen Anne's, Baltimore, Worcester, Caroline, and Talbot Counties	<ul style="list-style-type: none"><li>- For use in routine planning</li></ul>

382+ downloads so far

Aboveground biomass (Mg ha<sup>-1</sup>) at 30-m resolution  
for the tri-state region of Maryland, Pennsylvania,  
and Delaware in 2011.







## National Scale Forest Disturbance Map

PI: Christopher Williams, Clark University

**Description:** 30-m resolution map with moderate to high intensity harvesting, bark beetle outbreaks, and wildfires, including year of disturbance, and for beetle outbreak and fire disturbances

**Spatial Coverage:** Conterminous USA (CONUS)

**Spatial Resolution:** 30-m resolution

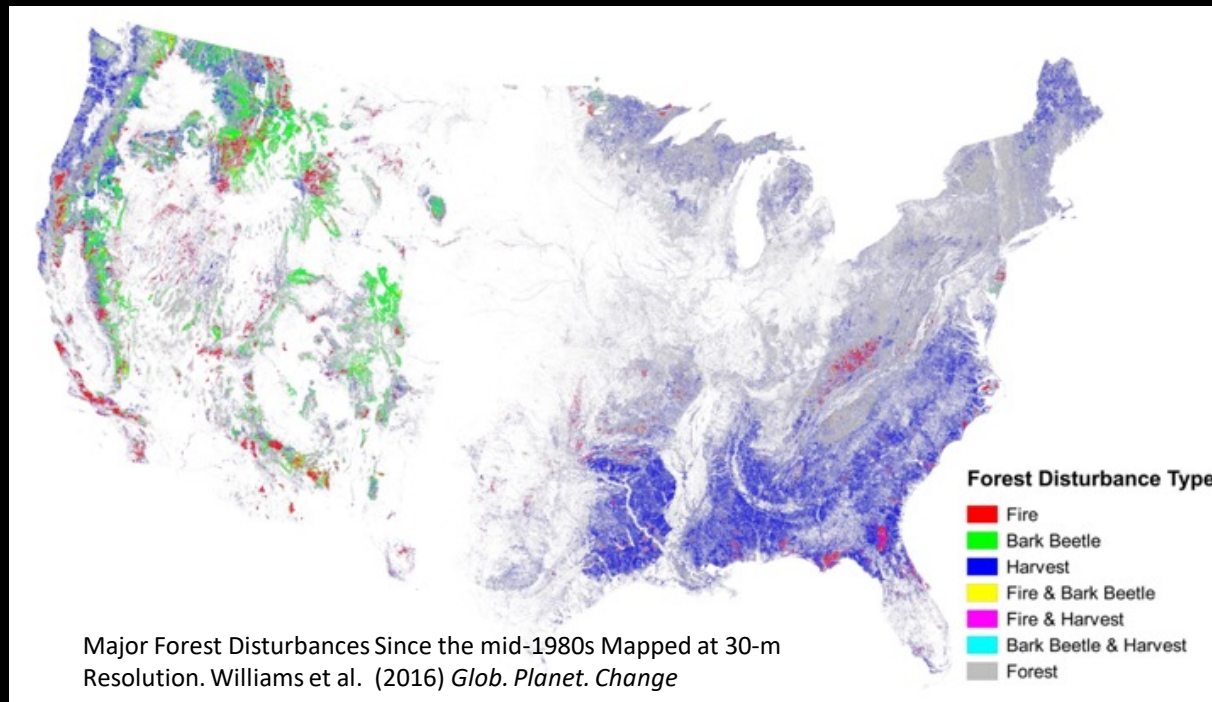
**Temporal Coverage:** 1986 - 2010

**Temporal Resolution:** Annual

**ARL:** 7

**Users & Purpose:** TNC and the Climate Alliance have used / are using this dataset to assess opportunities for afforestation/reforestation as a natural climate solution pathway

**Limitations:** (1) attribution to disturbance type (harvest, fire, beetle outbreaks, wind, other) remains far from perfect – collaborators should be developing better alternatives; (2) partial disturbance events are likely to be missing, including modest severity tree mortality events of scale smaller than 60 m x 60 m



### USFS Potential Applications:

- To assess forest carbon uptake rates in diverse climate and forest type settings
- To assess the sustainability of timber resource management at state to regional levels
- To perform regional to national scale UNFCCC National Inventory Reporting
- To assess disturbance threats to US forests and impacts on the carbon balance of forested landscapes
- To assess the potential climate benefits of afforestation/reforestation
- To perform full forest sector carbon balance accounting



## *Aboveground Biomass Maps for NW USA, 2000-2016*

*PI: Andrew Hudak, USDA Forest Service*

**Description:** AGB wall-to-wall maps and  
lidar-based AGB maps for NW United States.

**Spatial Coverage:** Northwestern U.S. (WA,  
OR, ID)

**Spatial Resolution:** 30-m

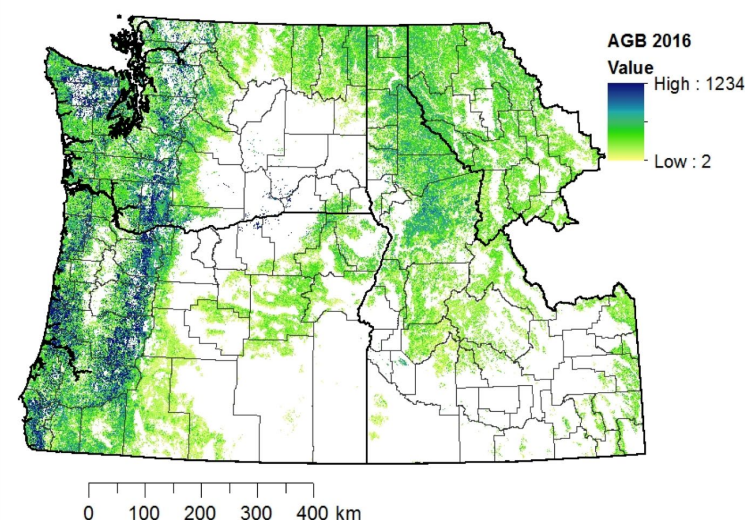
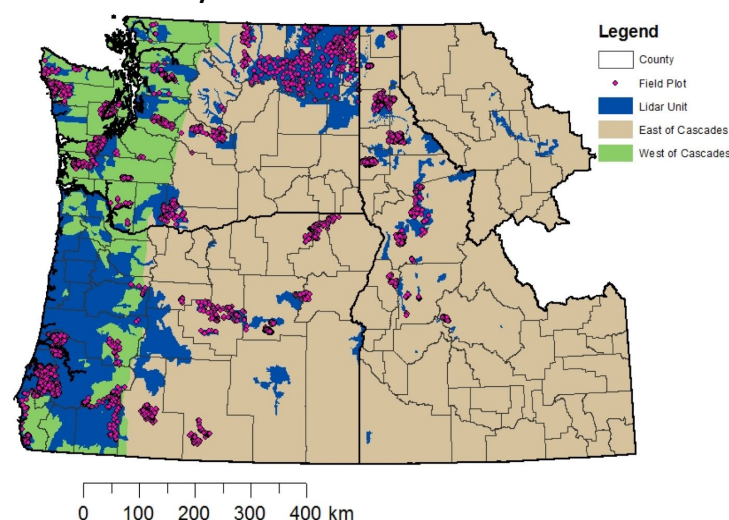
**Temporal Coverage:** 2000 – 2016

**Temporal Resolution:** Annual

**ARL:** 5

**Users & Purpose:** Northwest Management,  
Colville Tribe in WA, USFS Idaho Panhandle  
National Forest in ID for forest level  
analysis/management

Hudak CMS Study Area



2016 AGB wall-to-wall map from Landsat time series (2000-2016)  
processed through LandTrendr (Kennedy et al. 2010)

## USFS Potential Applications:

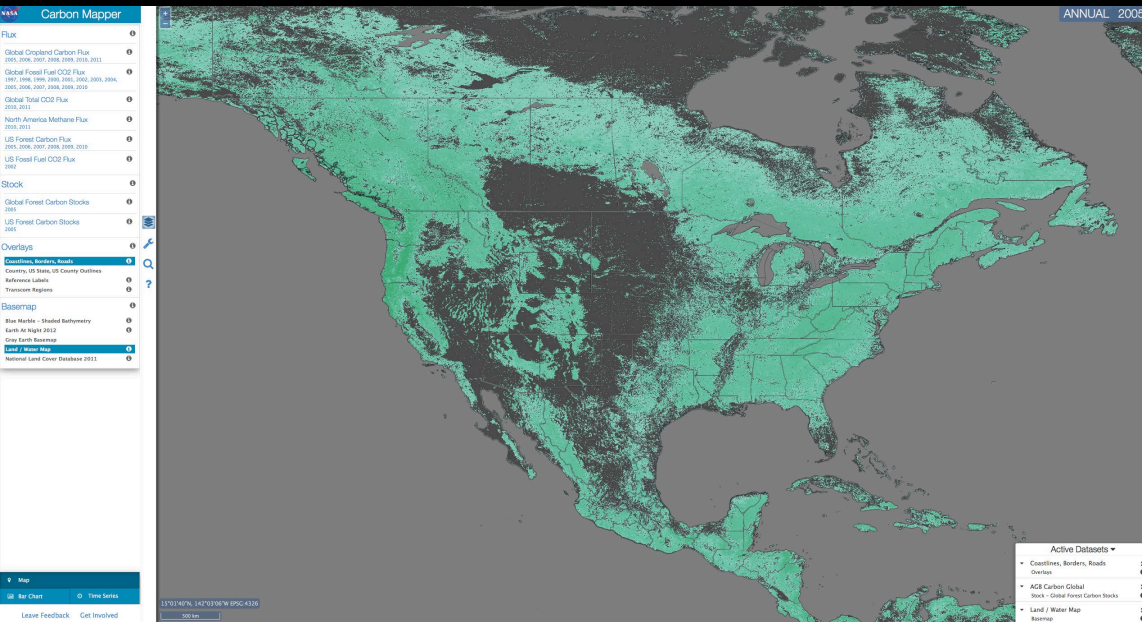
- Wall-to-wall AGB maps would provide sufficient information for forest level analysis/management; Lidar-based AGB maps would be preferred for project level analysis
- Can help in the development of the Five-Year-Action-Plan (5-YAP) (e.g. USFS Region 4 & 6)
- Forest management for carbon sequestration

**Lessons Learned:** The needs and objectives of forest managers will remain local, centered on the lands they are charge to manage; because lidar is so informative for multiple natural resource management objectives, we can expect demand for lidar-derived products will continue, regardless of political priorities.





# Highlighting Relevant CMS Tools for USFS



## Carbon Mapper

PI: Riley Duren, NASA JPL

Description: a prototype data portal and analysis tool, which provides a common platform for visualizing information contained in selected CMS data sets.

**WFEIS Online Modeling Tool, PI: Nancy French**  
Products for CMS were developed with the tool

**AREA<sup>2</sup> developed by CMS PI**  
**Pontus Olofsson, BU**



# Discussion Questions for Workshop

- What are your carbon data needs and interests?
- What are some positive aspects of CMS data for your work?
- What scientific advancement(s) could contribute to your work?
  - What data do you need? When? Be as specific as possible.
- Are there any improvements that can be made short term? Accessibility, time domain, spatial scale, and frequency of data updates?
- What are other success stories you can share from partnerships/collaborations between NASA and USFS?
- What are some ongoing or planned USFS initiatives in which CMS could contribute data and/or expertise?
- Would you be interested in presenting at the CMS Policy Speaker Series, or other CMS Applications events?
- Any other feedback, ideas, and suggestions on stakeholders to engage, or activities to include in our efforts?

## CONTACT INFORMATION

Edil Sepulveda Carlo, CMS Applications Coordinator

301-614-6243

[edil.sepulvedacarlo@nasa.gov](mailto:edil.sepulvedacarlo@nasa.gov)